

PROFESSIONAL OFFICE ADJACENT TO GOVERNMENT COMPLEX



FOR LEASE

2670 AIRPORT ROAD S, NAPLES, FL 34112



SUITE	SIZE (SF)	LEASE RATE (PSF)	MONTHLY BASE RENT	CAM (PSF)	MONTHLY CAM	MONTHLY SALES TAX	MONTHLY TOTAL
300	2,700	\$19.00	\$4,275.00	\$6.00	\$1,350.00	\$253.13	\$5,878.13

LEASE RATE: \$19.00 PSF NNN

CAM: \$6.00 PSF

SIZE: 2,700± SF

LOCATION: On Airport Road S, just north of Tamiami Trail E, adjacent to the Collier Government Complex

ZONING: C3 - Commercial (Collier County)

YEAR BUILT: 1973

MOVE-IN READY

Prime office space opportunity on the entire third floor of this meticulously maintained building. Move-in ready with freshly painted walls and cleaned carpets, this space exudes a professional ambiance. Benefit from building and monument signage for enhanced visibility. Strategically located on Airport Rd S, just north of the US 41 intersection, near Downtown Naples and Fifth Avenue. This central location is adjacent to the Collier County Government Complex, offering a short walk to the courthouse and nearby Starbucks.

CONTACT

DAVE WALLACE, CCIM, SIOR
Senior Vice President
239.659.1447 x218
dave.wallace@creconsultants.com

DAVID WALLACE
Senior Associate
239.659.1447 x223
david.wallace@creconsultants.com

12140 Carissa Commerce Ct, Suite 102
Fort Myers, FL 33966
1100 Fifth Ave. S, Suite 404
Naples, FL 34102

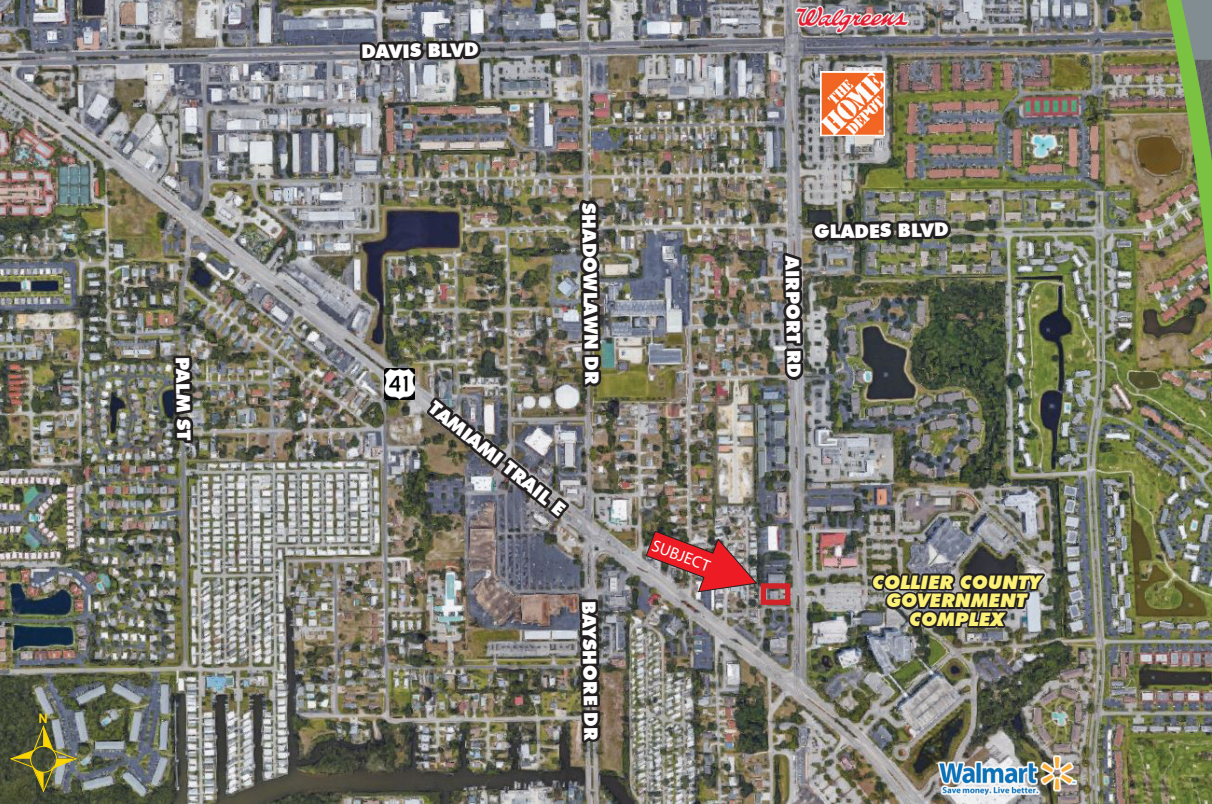
The information contained herein was obtained from sources believed reliable. CRE Consultants makes no guarantees, warranties or representations as to the completeness or accuracy thereof, and is subject to errors, omissions, change of price or conditions prior to sale or lease, or withdrawal without notice.

PROFESSIONAL OFFICE ADJACENT TO GOVERNMENT COMPLEX



FOR LEASE

2670 AIRPORT ROAD S, NAPLES, FL 34112



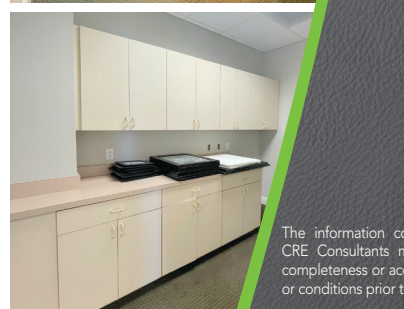
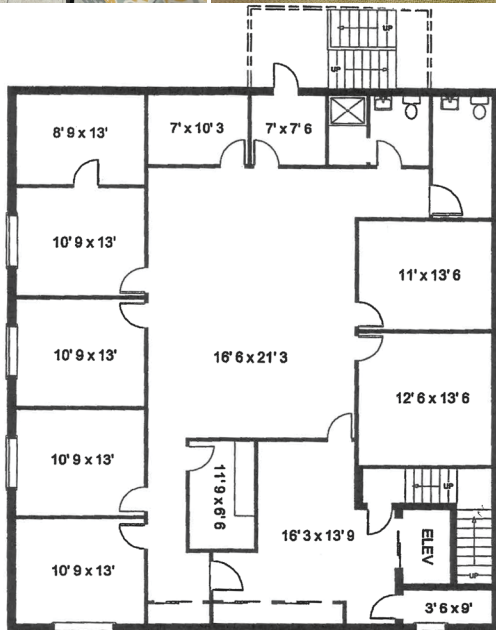
HIGHLIGHTS

- Move-in ready office
- Adjacent to the Collier County Government Complex
- Quick access to downtown Naples prestigious 5th Avenue S shopping district
- Ample parking



3rd Floor

**SUITE 300
2,700± SF**



CONTACT

DAVE WALLACE, CCIM, SIOR
Senior Vice President
239.659.1447 x218
dave.wallace@creconsultants.com

DAVID WALLACE
Senior Associate
239.659.1447 x223
david.wallace@creconsultants.com

The information contained herein was obtained from sources believed reliable. CRE Consultants makes no guarantees, warranties or representations as to the completeness or accuracy thereof, and is subject to errors, omissions, change of price or conditions prior to sale or lease, or withdrawal without notice.